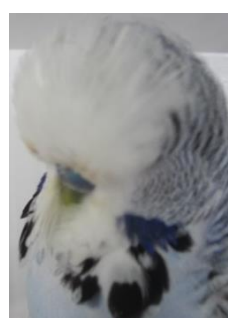


49th Annual Show Schedule - 2017.



SATURDAY 18 MARCH

Venue: North Rockhampton High Performing Arts Centre,
Simpson Street, North Rockhampton

Judge: Mr Wayne Robinson (SQBBA Judge from Brisbane)

Chief Steward: Ian Schneider

Show Secretary: Russell Ogden

Entries: All entries must be on CBS approved entry forms (provided) Entries need exhibitors to use the class numbers as per the schedule in this newsletter.

Entry Fee: 50 cents per bird.

Entries Close: Day of Show, 8-15 am. Late entries will not be accepted.

Benching: by 8-45 am

Judging: 9-00 am

All persons responsible for winning exhibits must be present for checking of rings on completion of judging or exhibits will be disqualified.

Presentation of Trophies: Approximately 30 minutes after completion of judging.

Release of birds to follow presentation. The Chief Steward will advise time.

Please Note:

- Club show rules must be strictly adhered to.
- Proof of ownership must be produced for all winning exhibits, CBS rings excluded.
- Drinkers must be in show cages.
- Cage stickers to be adhered on the RIGHT hand side of cage.
- It is the Exhibitor's responsibility to ensure all of their birds are nominated in the correct classes and mark cages accordingly.
- **All birds entered must be Owner-bred.**

There will be a selling section on the same day. 10% of proceeds to CBS Inc.. Members are requested to bring a plate for Morning Tea.

2017 ANNUAL SHOW AWARD LIST

<u>Grand Champion of Show.</u>	GOURLEY Family Trophy plus \$25.00 Trophy
<u>Ch. Opposite Sex of Show</u>	O'Callaghan Family Trophy
<u>Ch. Young Bird of Show rung 2016</u>	Jack Mitton Memorial Y B Trophy
<u>Ch. Beginner Bird of Show.</u>	Stam Family Trophy
<u>Ch. Derby Bird .</u>	Noel Shanahan Memorial Trophy.
<u>Ch. Derby Bird - Beginner</u>	Special Award donated by John Stam
<u>Derby Cock and Hen</u>	Share the Derby Rings prize money pool.
<u>CBS Variety Bird</u>	Special Award donated by John Stam (Greywing, rung 2016)
<u>Best Team of 3, must be all same Sex.</u>	\$10.00 cash prize.
<u>Champion of EACH VARIETY :</u>	\$15.00 cash prize per variety

Special award for both Best Lutino and Best Albino, sponsored by John Stam.

OPEN CLASS and BEGINNER CLASS each receive the following:

Champion Any Age Cock	\$15.00 cash prize
Champion Any Age Hen	\$15.00 cash prize
Champion Young Cock	\$15.00 cash prize
Champion Young Hen	\$15.00 cash prize
Champion Nestfeather	\$15.00 cash prize
Reserve Champion Any Age Cock .	\$10.00 cash prize
Reserve Champion Any Age Hen	\$10.00 cash prize
Reserve Champion Young Cock	\$10.00 cash prize
Reserve Champion Young Hen	\$10.00 cash prize
Reserve Champion Nestfeather	\$10.00 cash prize

Budgerigar Schedule for CBS Inc. ANNUAL SHOW 2017

Variety	Any Age Cock	Any Age Hen	Young Bird Cock	Young Bird Hen	Nest Feather
Normal Green	1	101	201	301	401
Normal Grey Green	2	102	202	302	402
Normal Blue	3	103	203	303	403
Normal Violet <small>Violet Cobalt only</small>	4	104	204	304	404
Normal Grey	5	105	205	305	405
Yellow Faced Blue (Normal only)	6	106	206	306	406
Australian Golden Faced Blue <small>Normal in Double factor</small>	7	107	207	307	407
Black Eyed Self .	8	108	208	308	408
Dilute	9	109	209	309	409
Lutino	10	110	210	310	410
Albino	11	111	211	311	411
Clearwing	12	112	212	312	412
Greywing	13	113	213	313	413
Cinnamonwing	14	114	214	314	414
Spangle Double Factor	15	115	215	315	415
Opaline	16	116	216	316	416
Opaline (AOSV) includes Blackeye, Clearwing, Greywing, Cinnamon	17	117	217	317	417
Clearbody includes Opaline	18	118	218	318	418
Lacewing includes Opaline	19	119	219	319	419
Fallow includes Opaline	20	120	220	320	420
Spangle <small>Normal only, not class 22 combination</small>	21	121	221	321	421
Spangle A.O.S.V <small>(Includes Greywing, Cinnamon, Opaline, Fallow, Yellowface).</small>	22	122	222	322	422
Dominant Pied <small>(Includes Greywing, Cinnamon, Opaline, Fallow, Yellow Face, Spangle)</small>	23	123	223	323	423
Danish Recessive Pied (Includes Greywing, Cinnamon, Opaline, Fallow, Yellow Face, Spangle)	24	124	224	324	424
Crested	25	125	225	325	425
AOV/AOSV Includes Australian White Cap, Saddleback, Dark Eye Clear	26	126	226	326	426

Nb only combination of sections 8 to 16 is Yellow Faced Blue. See ANBC matrix at <http://www.anbc.iinet.net.au/ANBC%20Standard%20Final%20October%202013%20master.pdf> for combinations of other sections 17- 25

